

GETCERTKEY



GETCERTKEY

100% guarantee you pass IT cert exam!

Instant Update

We are checking our exam questions all the time.



Security & Privacy



24/7 customer support

Free Demo Download

Try before you buy, Download a free sample of any of our exam questions and answers.



One Year Free Update

Free update is available within One Year after your purchase.



<http://www.getcertkey.com>

No help, Full refund!

Exam : **2VB-602**

Title : VMware Specialist: vRealize
Operations

Vendor : VMware

Version : DEMO

NO.1 Which of the listed vRealize Operations tabs can be used to investigate issues?

- A. Troubleshooting, Environment, Projects and Solutions tabs
- B. Only the Troubleshooting and Analysis tabs
- C. Details, Dashboards, Access, and Troubleshooting tabs
- D. Analysis, Details, Troubleshooting, and Environment tabs

Answer: B

NO.2 When creating a new Symptom, which metric evaluation type can take advantage of analytical trending identified by vRealize Operations?

- A. Compare
- B. Dynamic Threshold
- C. Analytical trending is not a feature of vRealize Operations
- D. Static Threshold

Answer: A

NO.3 If a customer determines that high availability (HA) is required for their vRealize Operations (vROps) cluster, which factor will need to be considered?

- A. Ensure that enough vROps cluster nodes have been deployed, as turning HA on will essentially reduce the cluster capacity in half
- B. Determine how many replica nodes will be needed based on the number of total nodes in the vROps cluster
- C. Ensure that HA is enabled in the Default policy
- D. Remote collectors will NOT be supported once HA is selected

Answer: A

NO.4 After running the Rebalance Container action, where can a user view the status and verify all of the virtual machines were moved?

- A. Workload Utilization dashboard
- B. Alerts tab
- C. Home Screen
- D. Recent Tasks

Answer: D

NO.5 Which two networking requirements are true about the node types in a vRealized Operations (vROps) cluster?

(Choose two.)

- A. Analytics cluster nodes must be on separate VLANs as long as they are in the same cluster
- B. All node types including remote collectors must be bi-directionally routable by IP address or FQDN
- C. An underscore must NOT be included in the hostname of any cluster node
- D. All vROps cluster node types must be configured with dynamic IP addresses

Answer: B,C

NO.6 The power user role provides which three privileges? (Choose three.)

- A. Alerts management
- B. User management
- C. Dashboard management
- D. Cluster management
- E. Solutions management

Answer: A,C,E

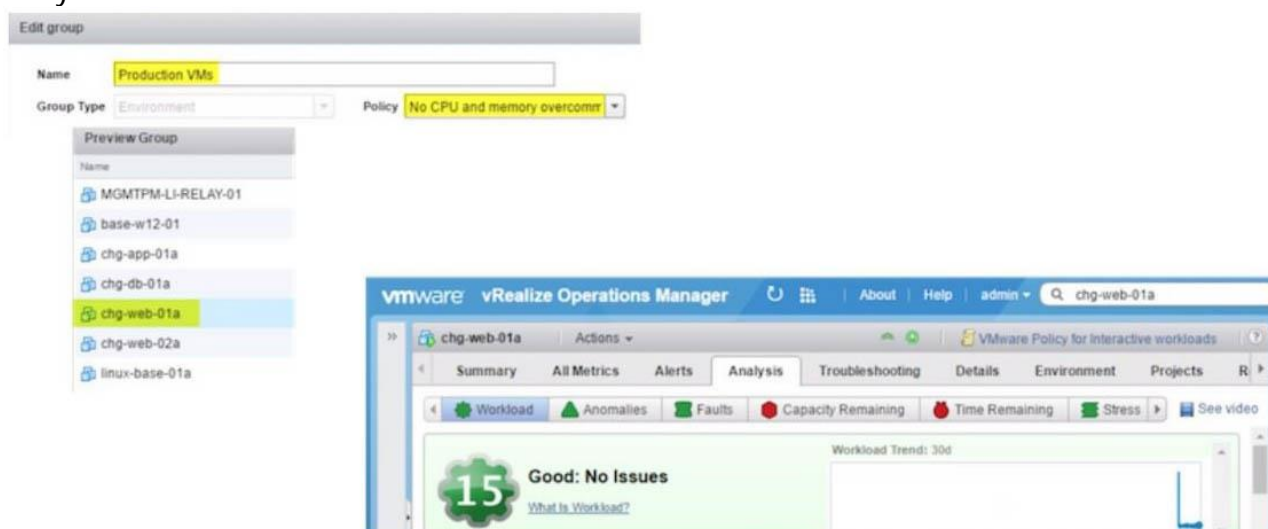
Explanation

Users have privileges to perform the actions of the Administrator role except for privileges to user management and cluster management. vRealize Operations Manager maps vCenter Server users to this role.

NO.7 View the Exhibit.

The VM chg-web-01a is a member of several Custom Groups including the "Production VMs" Custom Group.

The "Production VMs" Custom Group is associated with the "No CPU and memory overcommit" Policy.



As shown in the Exhibit, what is the effective policy for this VM?

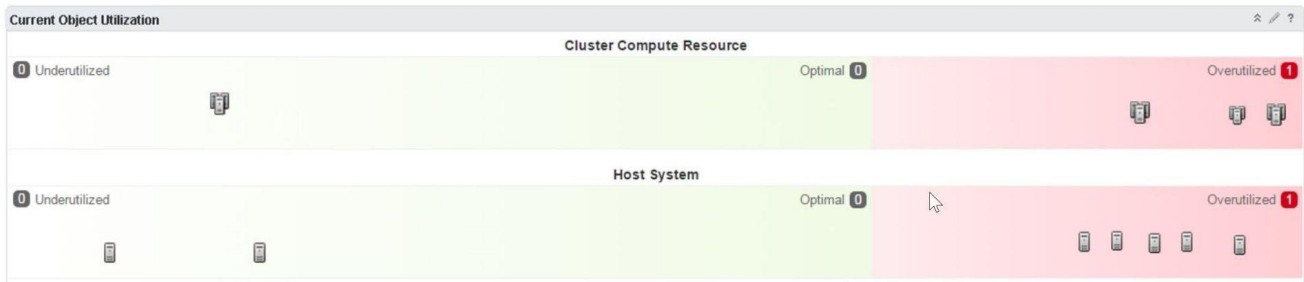
- A. The VMware Policy for Interactive workloads policy.
- B. The Default policy.
- C. The No CPU and memory overcommit policy
- D. There is no policy associated with the chg-web-01a VM.

Answer: A

NO.8 What is Usable Capacity in vRealize Operations?

- A. The total capacity minus the current demand.
- B. The total capacity minus the sum of the high availability reservations and vRealize Operations buffers.
- C. The total capacity available.
- D. The amount of capacity a workload is requesting.

Answer: B

NO.9 View the exhibit.

Based on the Object Utilization widget for a data center referenced in the exhibit, which statement is true?

- A. The data center is running low on capacity.
- B. Distributed Resource Scheduler (DRS) is incorrectly configured in three of the clusters.
- C. The data center has a number of hosts with hardware faults.
- D. The data center would benefit from a Rebalance Container action.

Answer: B

NO.10 A rebalance plan from the Rebalance Container action includes which three pieces of information? (Choose three.)

- A. Reason for move
- B. Time the virtual machine was last moved
- C. Destination cluster
- D. Applications impacted
- E. Virtual machines to be moved

Answer: A,C,E

NO.11 Which items may be contained in a management pack for vRealize Operations?

- A. Adapter, resources, logs and views
- B. Adapter, reports, dashboards, symptoms and alerts
- C. Queries, reports and content packs
- D. Sample configurations, logs and authentication sources

Answer: B

NO.12 vRealize Operations (out of the box) provides many ways to help with optimizing and improving utilization of resources in the data center. Which two choices does vRealize Operations provide out of the box? (Choose two.)

- A. Reports such as "Idle VMs report"
- B. Analysis badges such as "Reclaimable Capacity" and "Density"
- C. Custom Profiles such as "MonsterVM"
- D. Supermetrics such as "SM_AvgMemContention"
- E. Maintenance Schedules such as "SundayWeekly"

Answer: A,B